

HOTEL

SAINT

Meetings & Events



Welcome to Hotel Saint

Located in the heart of London, you'll find everything you need at our 4-star hotel, with great connections to London Underground and Liverpool Street Train Station.

- 272 rooms in total
- 18 suites
- 14 accessible rooms
- All-day dining restaurant
- Sky Bar
- Fitness Centre
- Complimentary Wi-Fi
- Air conditioning
- In-room safe
- Work desk
- Mini fridge
- 47-inch LCD TVs
- In-room tea/coffee facilities

Group rates start from £200 per night, and we offer bespoke, tailored packages for meetings and events (M&E). We also create customised group proposals to cater to all of your business and social needs.





Our Location

Hotel Saint is located in the heart of London, with Aldgate Tube Station right on our doorstep and Liverpool Street Station just a short walk away.

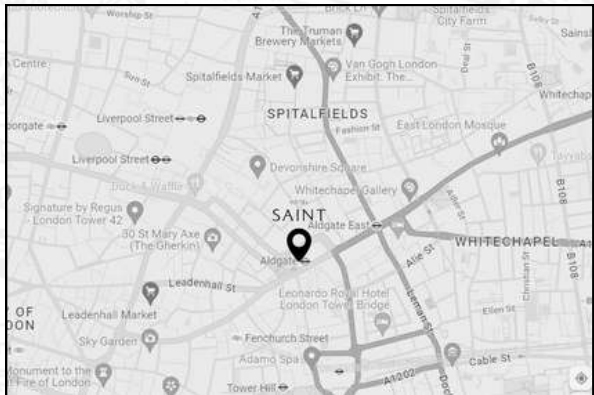
Corporate Exhibition Centres and walking distance	Leisure Attractions and walking distance
<ul style="list-style-type: none">• Tobacco Dock (25 minutes away)• ExCel Centre (9 minutes away to Tower Gateway DLR)• Convene (6 minutes away)• Tower Bridge Events (15 minutes away)• White Chapel Gallery (8 minutes away)	<ul style="list-style-type: none">• Sky Garden (10 minutes away)• Borough Market (21 minutes away)• London Bridge (16 minutes away)• Spitalfields Market (7 minutes away)• Barbican Centre (22 minutes away)• Brick Lane (16 minutes away)



EMAIL:
RFP@hotelsaint.com

PHONE:
44 (0) 203 805 1000

WEBSITE:
www.hotelsaint.com



9 Aldgate High Street, EC3N 1AH



THE CARDINAL BAR & KITCHEN

The Cardinal Bar & Kitchen, nestled on the ground floor, is a dynamic all-day dining destination, perfect for groups looking to have drinks or to exclusively hire.

Its vibrant atmosphere and adaptable layout make it the ideal setting for events of all kinds. Step outside to our alfresco dining area, where seasonal touches like heaters and umbrellas ensure comfort come rain or shine.

Our talented team will design bespoke menus just for you, from crafted cocktails and canapés to full-course feasts.





Packages

We offer versatile event packages to suit any occasion, with room hire, day delegate rates, and private dining options available. Enjoy flexible pricing and all the essentials to make your event a success.

**Day Delegate Rate (DDR) starts
from £85 per person**

- Main Meeting Room Hire
- LCD Screen
- 1 flipchart and markers
- Working lunch
- Tea & coffee, including refreshment break with chef's choice snacks
- Mineral water (Still and sparkling)
- WIFI

**Private dining starts from
£95 per person**

- Room hire
- Mineral water (Still & Sparkling)
- Tea, coffee and cookies
- Arrival drink
- Three course set menu
- Half a bottle of wine
- WIFI

Room hire starts from £600

**Bespoke Drinks Reception starting
from £45 per person**

Hourly rates available upon request



Our Meeting Rooms

Our five versatile meeting rooms are designed to accommodate a wide range of events, from intimate VIP meetings to large conferences.

Each space is thoughtfully equipped to ensure a seamless experience, with flexible layouts and modern amenities to suit the unique needs of every gathering.

Find a style that suits you...



U-SHAPE



THEATRE



CLASSROOM



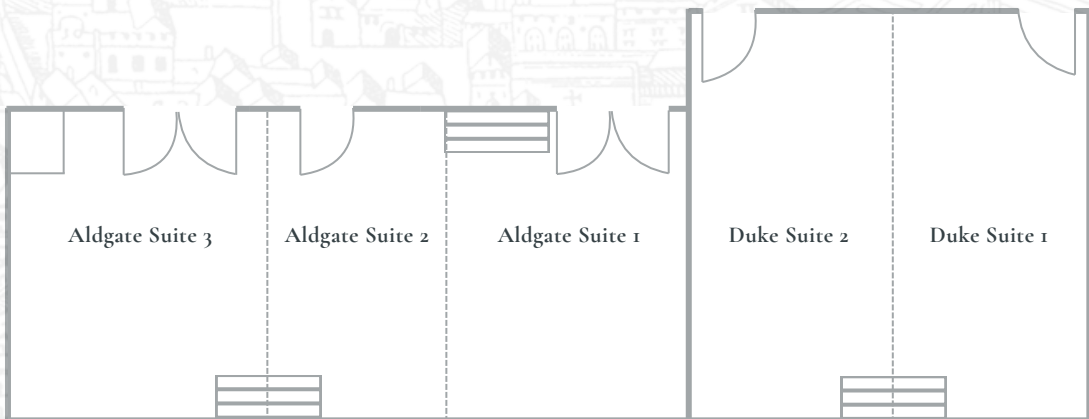
BOARDROOM

ROOM CAPACITIES

Setup	Dukes Suites	Dukes Suite 1	Dukes Suite 2	Aldgate Suites	Aldgate Suite 1	Aldgate Suite 2	Aldgate Suite 3	Aldgate Suite 1 + 2	Aldgate Suite 2 + 3
Boardroom	20	10	10	54	14	8	24	20	36
Classroom	24	-	-	54	18	-	24	30	36
Theatre	40	20	20	80	36	16	54	66	78
U Shape	15	-	-	-	12	-	12	12	12
Standing	40	-	-	70	40	-	40	40	40
Ceiling Height	2.4m	2.4m	2.4m	2.4m	2.4m	2.4m	2.4m	2.4m	2.4m
Width x Length	6.0m x 6.2m	6.0m x 3.1m	6.0m x 3.1m	5.0m x 19.6m	5.0m x 6.5m	5.0m x 3.1m	5.0m x 9.9m	5.0m x 9.6m	5.0m x 13.0m
Room Size (Square metres)	37.2 sqm	18.6 sqm	18.6 sqm	98.0 sqm	32.5 sqm	15.5 sqm	49.5 sqm	48 sqm	65.0 sqm



Floor Plan





Duke Suite 1 & 2

The Duke Suite offers a newly refurbished, light-filled space ideal for smaller meetings. It includes an LCD screen, hotel-branded stationery, automatic blinds and, modern lighting.

Setup	Boardroom	Classroom	Theatre	U shape	Standing/ Cocktails
Duke Suites	20	24	40	15	40
Duke Suite 1	10	-	20	-	-
Duke Suite 2	10	-	20	-	-



Measurements	Ceiling Height	Width x Length	Room Size (Square Meters)
Duke Suites	2.4m	6.0m x 6.2m	37.2sqm
Duke Suite 1	2.4m	6.0 x 3.1m	18.6sqm
Duke Suite 2	2.4m	6.0 x 3.1m	18.6sqm





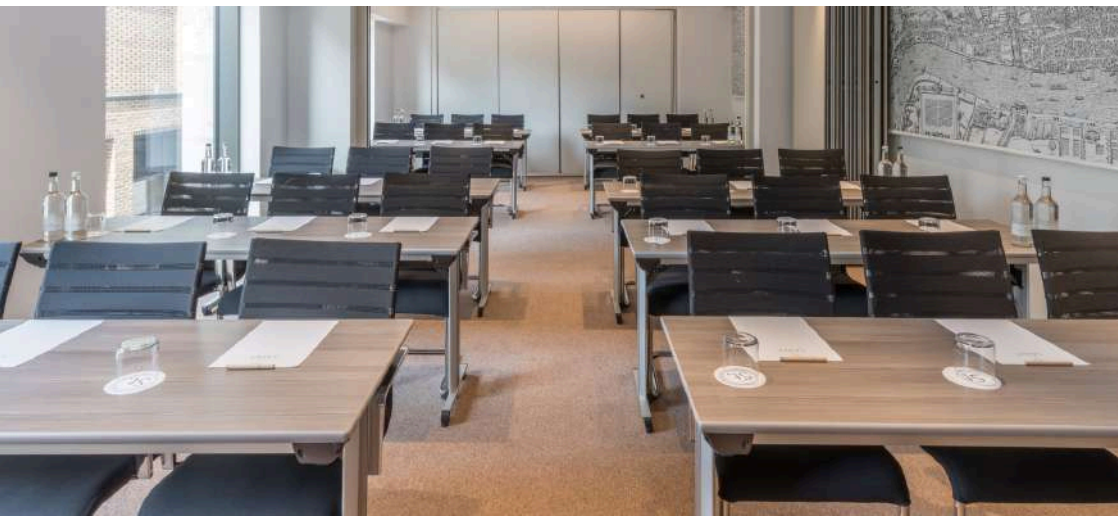
Aldgate Suite 1, 2 & 3

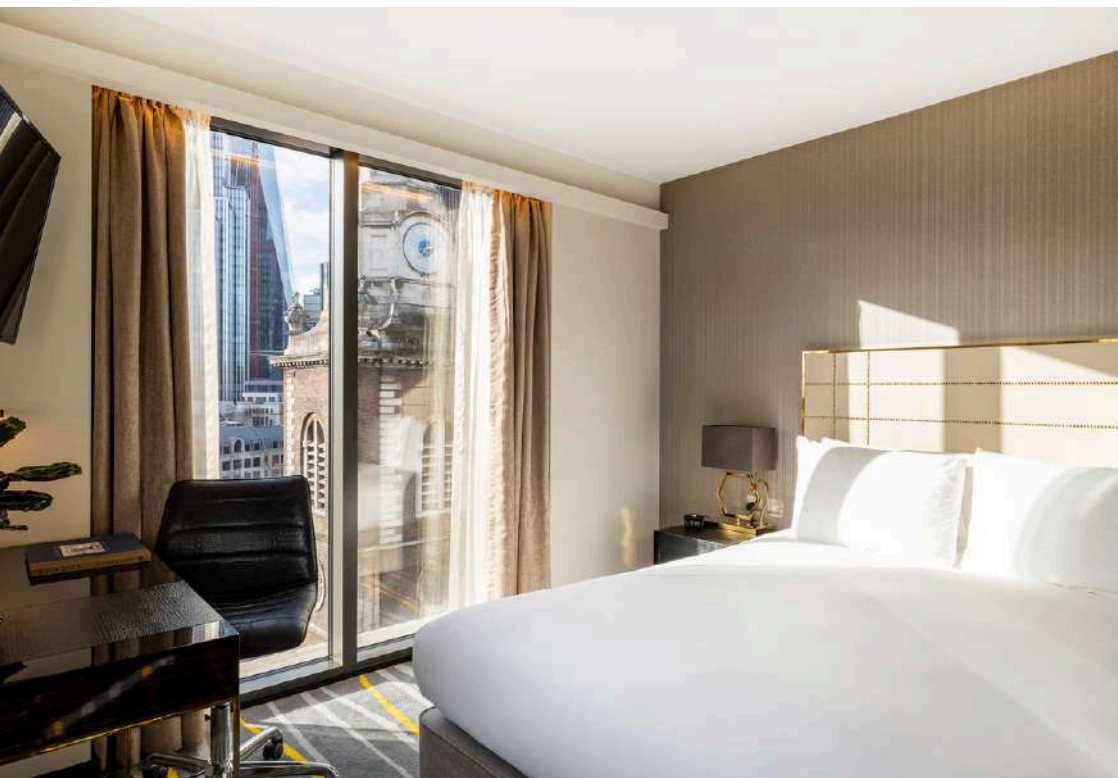
Perfect for larger meetings, Aldgate Suites provide a newly refurbished, spacious environment with natural daylight. They feature an LCD screen, hotel-branded stationery, automatic blinds, and modern lighting.

Setup	Boardroom	Classroom	Theatre	U shape	Standing/ Cocktails
Aldgate Suites	54	54	80	-	70
Aldgate Suite 1	14	18	36	12	40
Aldgate Suite 2	8	-	16	-	-
Aldgate Suite 3	24	24	54	12	40
Aldgate Suite 1 & 2	20	30	66	12	40
Aldgate Suite 2&3	36	36	78	12	40



Measurements	Ceiling Height	Width x Length	Room Size (Square Meters)
Aldgate Suites	2.4m	5.0m x 19.6m	98.0 Sqm
Aldgate Suite 1	2.4m	5.0m x 6.5m	32.5 Sqm
Aldgate Suite 2	2.4m	5.0m x 3.1m	15.5 Sqm
Aldgate Suite 3	2.4m	5.0m x 9.9m	49.5 Sqm
Aldgate Suite 1 & 2	2.4m	5.0m x 9.6m	48 Sqm
Aldgate Suite 2&3	2.4m	5.0m x 13.0m	65.0 Sqm







Contact Us

EMAIL:

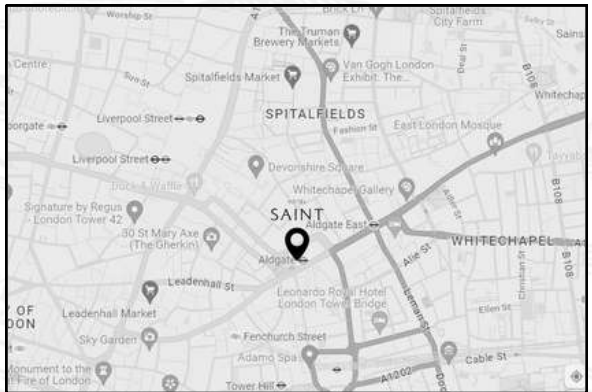
RFP@hotelsaint.com

PHONE:

44 (0) 203 805 1000

WEBSITE:

www.hotelsaint.com



9 Aldgate High Street, EC3N 1AH

